

FOR LEASE

124-126 Throop Avenue
(b/t Flushing Ave & Whipple St)
Williamsburg, Brooklyn

2,200 SF

**Warehouse +
2,200 SF Land**



Description:

Bldg Dimensions: 20' x 110'
Two Drive-In Gates
Skylights
C/o for "Auto Repair"

13' Ceiling Height
Office
Gas Heat / Heavy Power
C4-3 Zoning

Subway:

Two Blocks from the Flushing Ave/Broadway "J, M" Subway Station

Asking Price:

\$8,000.00 per Month

Vincent Lopez

Exclusive Agent:

917-523-5772

vlopez@krgnyc.com

Jacques Wadler

Exclusive Agent:

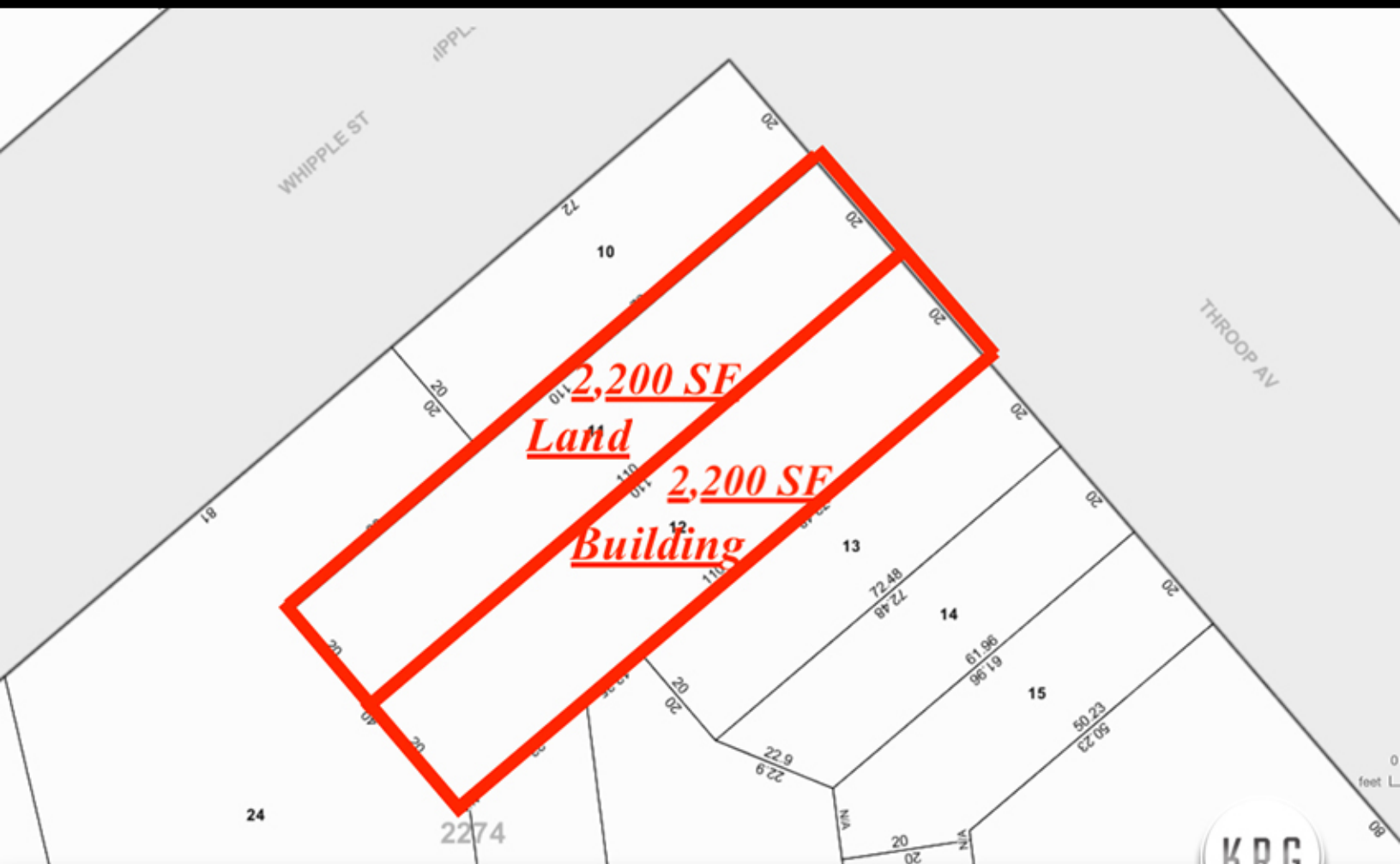
516-650-1123

jwadler@krgnyc.com

124-126 THROOP AVENUE, BROOKLYN

KRG

ALL INFORMATION IS FROM SOURCES DEEMED RELIABLE, BUT SUBJECT TO: ERRORS, CHANGES WITHOUT NOTICE, PRIOR SALE OR LEASE, WITHDRAWAL WITHOUT NOTICE. ALL MEASUREMENTS ARE APPROXIMATE



124-126 THROOP AVENUE, BROOKLYN

ALL INFORMATION IS FROM SOURCES DEEMED RELIABLE, BUT SUBJECT TO: ERRORS, CHANGES WITHOUT NOTICE, PRIOR SALE OR LEASE, WITHDRAWAL WITHOUT NOTICE. ALL MEASUREMENTS ARE APPROXIMATE

