

## Highlights:

- 1,250 SF (25' x 50') - Ground Floor
- 1,000 SF (50' x 20') - Basement
- 13' Ceiling Height
- Glass Storefront
- Center Skylight
- Split A/C System
- Bedford Ave  Subway Station

### NEARBY



## Lease Price: Upon Request

**Vincent Lopez**  
Exclusive Agent:  
**917-523-5772**  
[vlopez@krgnyc.com](mailto:vlopez@krgnyc.com)

**Jacques Wadler**  
Exclusive Agent:  
**516-650-1123**  
[jwadler@krgnyc.com](mailto:jwadler@krgnyc.com)



## 82 NORTH 3RD STREET, WILLIAMSBURG, BROOKLYN

# KNICKERBOCKER

REALTY GROUP LLC

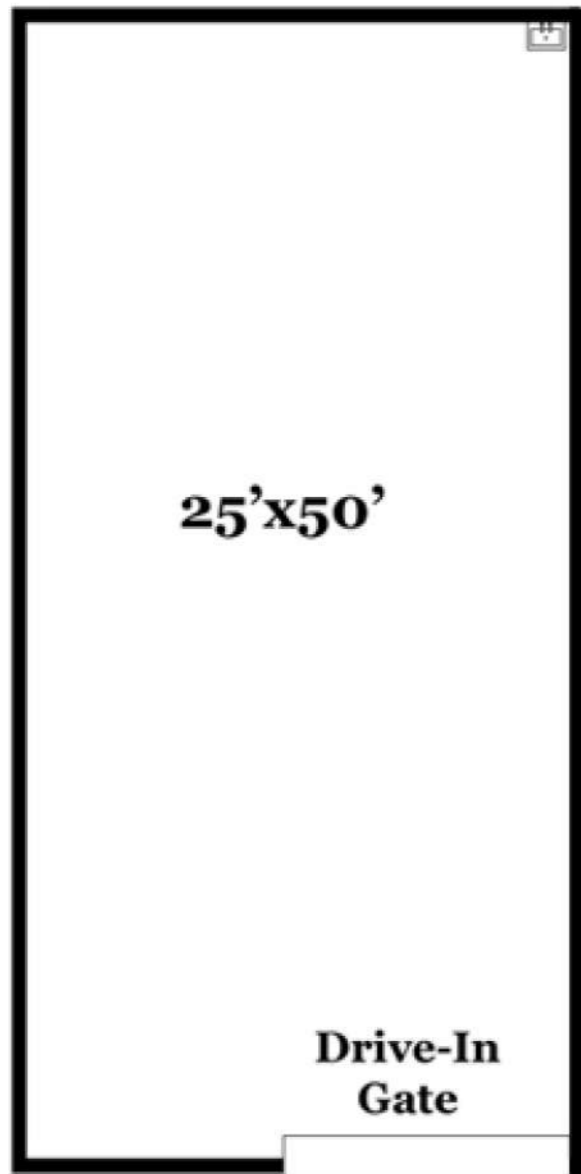
408 SENECA AVENUE | RIDGEWOOD, NY 11385 | 718-928-0300 | WWW.KRGNYC.COM



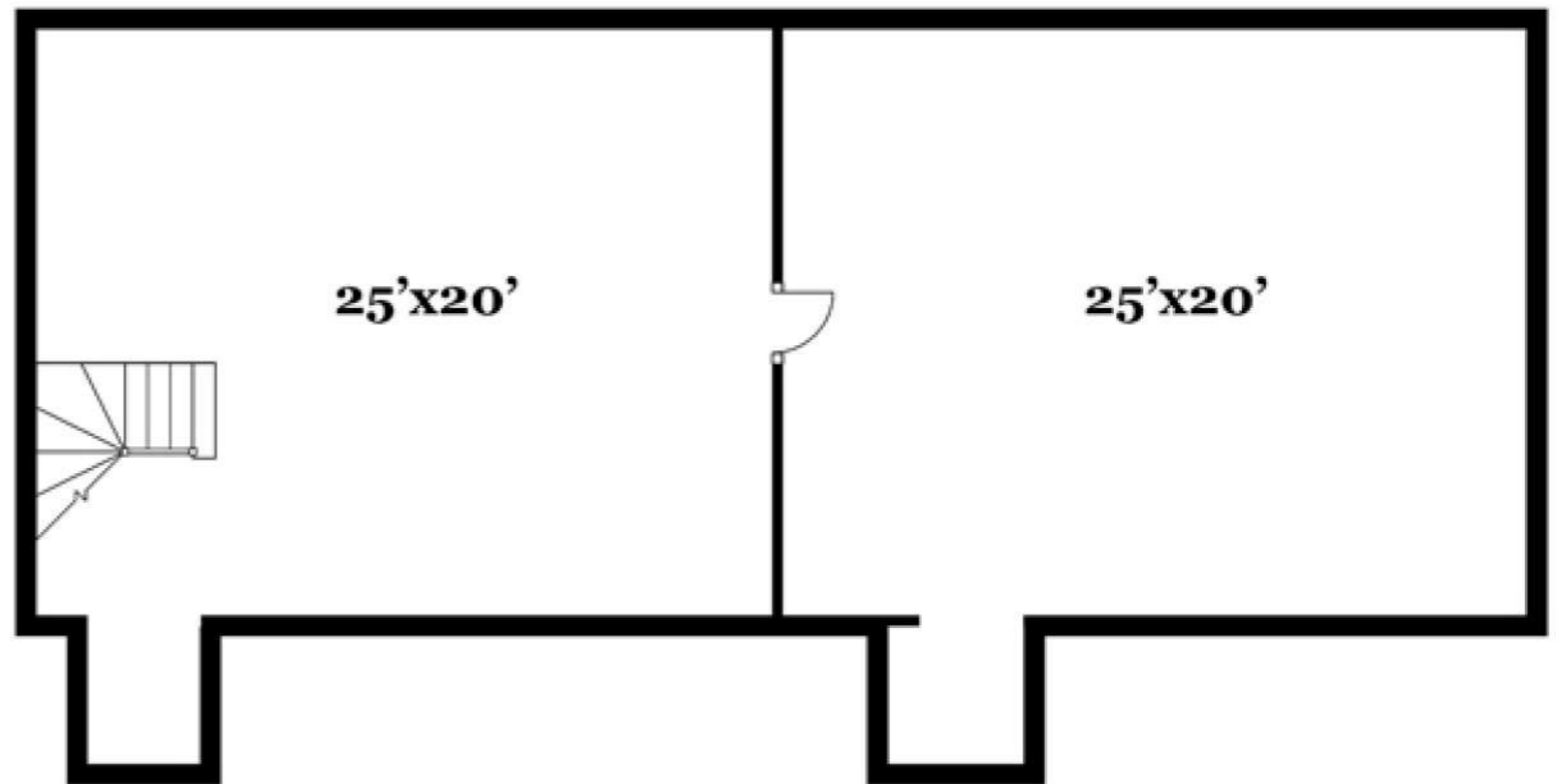
82 NORTH 3RD STREET, WILLIAMSBURG, BROOKLYN

ALL INFORMATION IS FROM SOURCES DEEMED RELIABLE, BUT SUBJECT TO: ERRORS, CHANGES WITHOUT NOTICE, PRIOR SALE OR LEASE, WITHDRAWAL WITHOUT NOTICE. ALL MEASUREMENTS ARE APPROXIMATE

## GROUND FLOOR



## BASEMENT



82 NORTH 3RD STREET, WILLIAMSBURG, BROOKLYN

