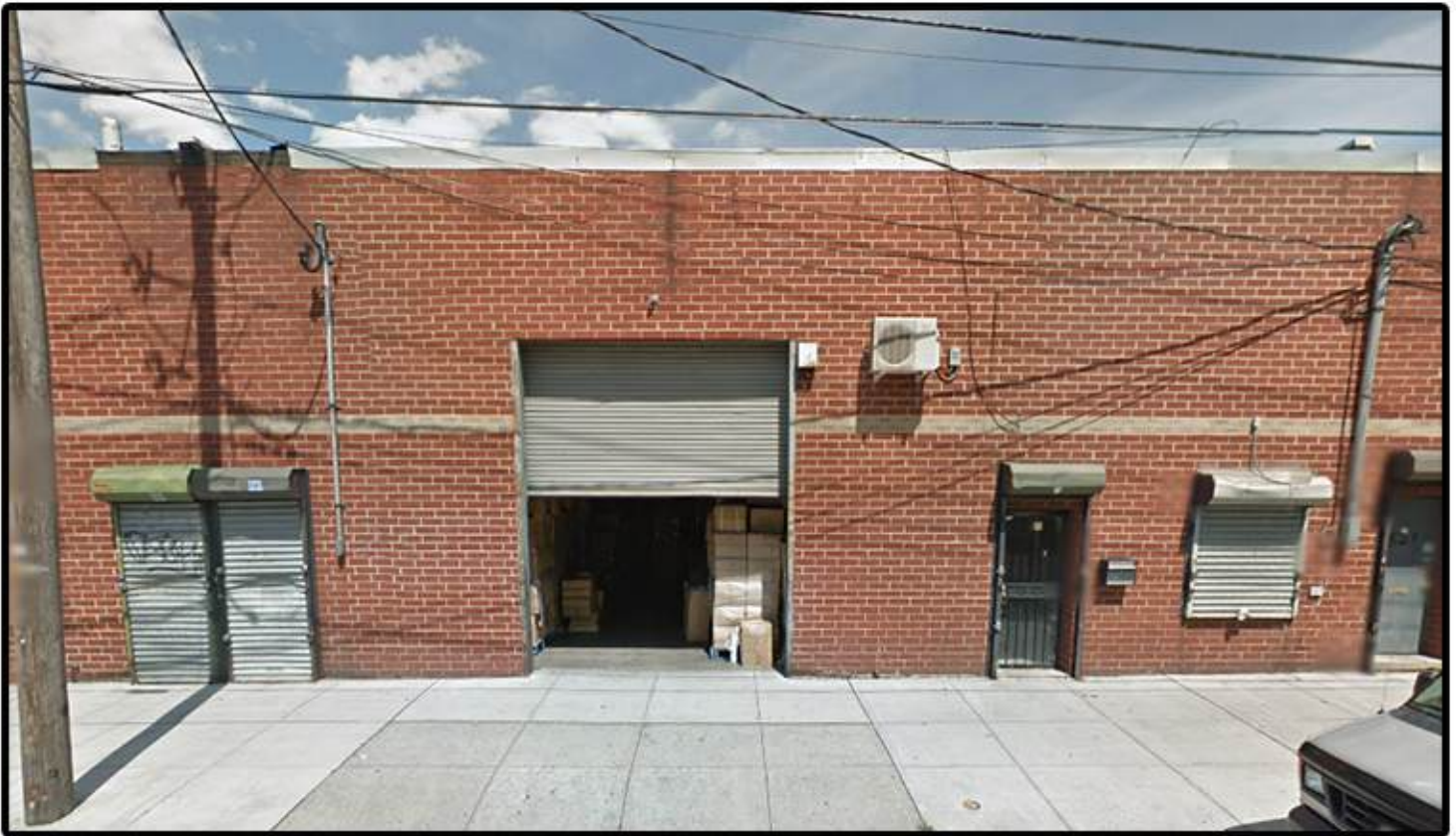


# **FOR LEASE**

**521-523 East 82nd Street  
(b/t Foster Avenue & Farragut Avenue)  
Canarsie, Brooklyn**

**5,000 SF  
Warehouse**



**Highlights:**

- 18' Ceiling Height
- Offices
- Two Restrooms
- One Overhead Drive-In Gate (14' x 14')
- Gas Heat / Heavy Power
- M1-1 Zoning

**Asking Price:** \$10,000.00 per Month

**Barak Sharabi** | Exclusive Agent:  
**347-231-0088** | [bsharabi@krgnyc.com](mailto:bsharabi@krgnyc.com)

**521-523 EAST 82ND STREET, CANARSIE, BROOKLYN**







**521-523 EAST 82ND STREET, CANARSIE, BROOKLYN**



ALL INFORMATION IS FROM SOURCES DEEMED RELIABLE, BUT SUBJECT TO: ERRORS, CHANGES WITHOUT NOTICE, PRIOR SALE OR LEASE, WITHDRAWAL WITHOUT NOTICE. ALL MEASUREMENTS ARE APPROXIMATE

THE CITY OF NEW YORK



# DEPARTMENT OF BUILDINGS CERTIFICATE OF OCCUPANCY

228320

BOROUGH Brooklyn

DATE:

**NO.**

This certificate supersedes C.O. No. **227323**

THIS CERTIFIES that the new-altered-existing-building-premises located at

ZONING DISTRICT ~~MA-1~~

Block 7951

Lot 43

523 East 82nd Street

523 East 82nd Street  
CONFORMS SUBSTANTIALLY TO THE APPROVED PLANS AND SPECIFICATIONS AND TO THE REQUIREMENTS OF ALL APPLICABLE  
LAWS, RULES, AND REGULATIONS FOR THE USES AND OCCUPANCIES SPECIFIED HEREIN

### PERMISSIBLE USE AND OCCUPANCY

STORY	LIVE LOAD LBS PER SQ FT	MAXIMUM NO OF PERSONS PERMITTED	ZONING DWELLING OR ROOMING UNITS	BUILDING CODE INHABITABLE ROOMS	ZONING USE GROUP	BUILDING CODE OCCUPANCY GROUP	DESCRIPTION OF USE
First	On Ground				17	D-2	Metal Stamping and Office
		TOTAL: Metal Stamping and Office					
		New Code					

## OPEN SPACE USES

SPECIFY - PARKING SPACES, LOADING BERTHS, OTHER USES: NONE

**NO CHANGES OF USE OR OCCUPANCY SHALL BE MADE UNLESS  
A NEW AMENDED CERTIFICATE OF OCCUPANCY IS OBTAINED**

THIS CERTIFICATE OF OCCUPANCY IS ISSUED SUBJECT TO FURTHER LIMITATIONS, CONDITIONS AND SPECIFICATIONS NOTED ON THE REVERSE SIDE.

Borough Superintendent

COMMISSIONER

ORIGINAL

OFFICE COPY-DEPARTMENT OF BUILDINGS

☐ COPY

**523 EAST 82ND STREET, CANARSIE, BROOKLYN**

ALL INFORMATION IS FROM SOURCES DEEMED RELIABLE, BUT SUBJECT TO: ERRORS, CHANGES WITHOUT NOTICE, PRIOR SALE OR LEASE, WITHDRAWAL WITHOUT NOTICE. ALL MEASUREMENTS ARE APPROXIMATE.

KRG